

Crime Prevention Tips From: SHERIFF SADIE DARNELL



Crime Prevention Tips

National Night Out It's Americas Night Out Against Crime!



The "28th Annual National Night Out" (NNO), a unique crime/drug prevention event sponsored by the National Association of Town Watch (NATW). **This year's NNO has been scheduled for Tuesday, August 2, 2011.** NATW and the Alachua County Sheriff's Office cordially invite you and your community to be a part of our NIGHT OUT 2011 team.

Last year's National Night Out campaign involved citizens, Law Enforcement agencies, civic groups, businesses, neighborhood organizations and local officials from over 15,000 communities from all 50 states, U.S. territories, Canadian cities and military bases worldwide. In all, over 37 million people participated in National Night Out 2010.

NATIONAL NIGHT OUT is designed to:

- Heighten crime and drug prevention awareness;
- Generate support for, and participation in, local anticrime programs;
- Strengthen neighborhood spirit and police-community partnerships; and
- Send a message to criminals letting them know that neighborhoods are organized and fighting back.

Along with the traditional display of outdoor lights and front porch vigils, cities, towns and neighborhoods 'celebrate' NNO with a variety of events and activities such as:

- block parties, cookouts, visits from local Police and Sheriff's Offices, parades, exhibits, flashlight walks,
- contests, and youth programs.

NNO has proven to be an effective, inexpensive and enjoyable program to promote neighborhood spirit and police-community partnerships in our fight for a safer nation. Plus, the benefits your community will derive from NNO will most certainly extend well beyond the one night.

If you are interested in participating please contact Crime Prevention Deputy Leo Lowe at: lowe@alachuasheriff.org or call 352-367-4043 so that we can organize our attendance.



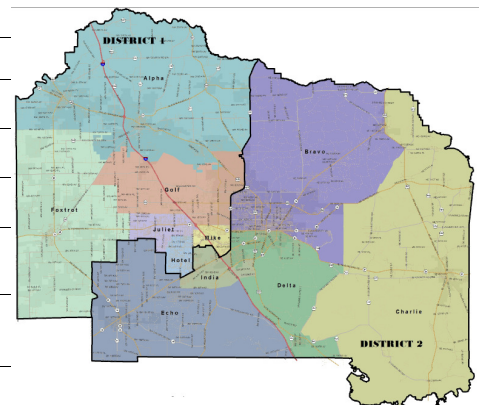
If you want supplies or you want to register with the NATW please click on the picture link to visit the official site.

Thank you in advance for your interest and support.

Sadie Darnell

INSIDE THIS ISSUE

National Night Out	1
Firework Safety	2
Intelligence Bureau Crime Tip	3
Preventing Copper Theft	3
Family & Traffic Crime Prevention Tip	4
(CPTED) For Neighborhoods	5 & 6
Current Events / Closing	6



Firework Safety



Summer time is here, and the firework season is right around the corner. Before the celebrations begin ensure that the whole family knows about firework safety. Lets always try to remember to keep safety at the front of our minds so that nothing can get in the way of enjoying a great time with family and friends.



The safest thing that you can do this firework season would be to leave the pyrotechnics in the hands of the professionals and attend one of the many firework shows in Alachua county.

If you're planning on creating your own firework show at home here are some safety tips to keep in mind:

- ★ Always have adult supervision
- ★ Alcohol and Fireworks don't mix always have a "designated shooter"
- ★ Water down your launch pad and have a bucket of water or hose nearby
- ★ Use common sense, for example using your hand as a launching pad would not be a good idea
- ★ Children under 12 should be highly supervised when using sparklers (sparklers can reach 1800⁰ Fahrenheit).
- ★ Dispose of used fireworks and sparklers after soaking them in a bucket of water
- ★ Be ready with first aid supplies for burns and eye injuries
- ★ NEVER alter or try to make your own fireworks
- ★ Think about your pet. Animals have sensitive ears and can be extremely frightened or stressed on the Fourth of July. Keep pets indoors to reduce the risk that they'll run loose or get injured.

Have a safe and happy summer. For more information please visit the national council on firework safety at www.fireworksafety.com

~~ Deputy David Tate

Social Media



Don't forget to check out the Alachua County Sheriffs office website at www.alachuasheriff.org and follow us on Twitter, YouTube, and Facebook to stay up to date with current events, crime tips, and so much more...



Intelligence Bureau Crime Tip



With the price of copper again on the rise a old problem has returned, the theft of copper from AC units. This has been particularly hard on rural churches which are an easy target for the thieves. They typically are only interested in a small part of the unit, the core, but take or destroy the entire unit in an attempt to remove the core.



Rural churches are an easy target since most are on isolated property, are not in use during the week, and have limited visibility from any roadway. Currently the Alachua County Sheriff's Office is investigating 5 cases of the theft of AC units from Churches, With copper at \$4.45 per pound (commodity market price) this is a problem that is likely to increase until copper prices drop back below \$3.00 per pound.

Analyst Michael Dwyer

Preventing Copper Theft



There are no absolutes in crime prevention these recommendations should make your home or business a hard target, so that potential thieves will bypass your home or business and look for an easier one.

- ★ Report all suspicious vehicles or persons that you see near or on your property. Reporting is essential for Law Enforcement even if you do not have a full description. Remember that Law Enforcement patrols and services can be focused on an area that has reported problems.
- ★ Consider an alarm system for your home, ac condenser, and out buildings. The cost is daunting at first however when you consider replacement costs if something is taken and the savings on insurance it become an economical decision. Alarm sensors that would be helpful on a ac condenser include motion sensors, pressure sensors within the system that monitor the coolant, vibration sensors, cut-line sensors, etc.
- ★ Consider an enclosure for your ac condenser. The enclosure can be as simple as chain link that a fence company can install or even a dog kennel if you can modify it. Some professional companies make wrought iron enclosures.
- ★ Never leave excess inventory, building supplies, or tools outside. With the cost of copper it is similar to leaving a pile of gold outside. It also makes potential thieves believe that there must be more valuable materials inside. Build an securable outbuilding or a shipping container will work for commercial sites.
- ★ Use high security pad locks. An inexpensive lock can be circumvented easily with a pair of scissors and a tin can. The instructions are on You-Tube. They can also cut low quality locks quite easily. A high security lock is made of stronger materials and utilizes more than one locking mechanism
- ★ Mark your tools and equipment with an engraving tool. It will not stop the potential theft but it might be enough to get the thieves convicted before they come back a second time. There are also paints that remain invisible until placed under a UV light.
- ★ Keep track of people from outside your home or business who you allow to have access to your property. House Keepers, Lawn Maintenance, Scrappers, Day Labor, outside contractors, etc. For some of these people the invitation into your home or business is an invitation to look around to see what they can steal.
- ★ Business and Churches that have had thefts should consider security cameras. The cameras help out in catching the criminals and in obtaining a conviction.
- ★ If you have landscaping around your property or around your ac condensers, consider keeping the hedges trimmed lower than 3 feet and the tree limbs higher than 7 feet. This allows Law Enforcement to view the property. Plants that are placed near windows, ac condensers, meter boxes, etc. should be "hostile vegetation" i.e. have thorns or other qualities that make them undesirable to stand in.

~~ Deputy Leo Lowe

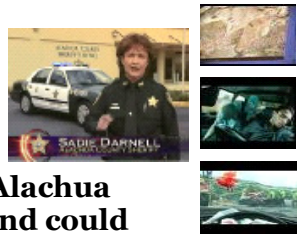
Family & Traffic Crime Prevention Tip



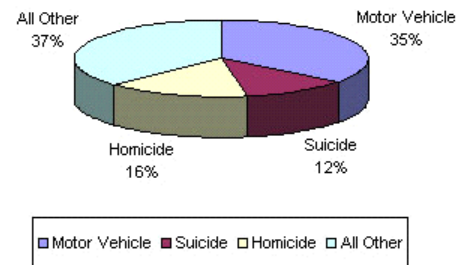
Family Crime Prevention Tip: Research shows which behaviors contribute to teen-related crashes. Inexperience and immaturity combined with speed, drinking and driving, not wearing seat belts, distracted driving (cell phone use, loud music, other teen passengers, etc.), drowsy driving, nighttime driving, and other drug use aggravate this problem. The number one preventative for teen crashes is proper education from the parent and doing as you say. Teens that are told not to talk on their phone or texting while driving will only listen if you practice what you preach. Talk about drinking and driving. Talk about distractions. Talk about driving sleepy. Show them some of these Public service announcements. Just press Ctrl and click on the picture link.

These videos are graphic but they illustrate the dangers in a way that teenagers can understand. Please watch them with your teens and discuss these very real dangers.

Sign your teens up for the Alachua County Teen Drivers Program. This is a hands-on course for giving teens the experience they need to drive safely under the supervision and training of Alachua County Sheriff's Office staff. It is free and could save their life.



Leading Causes of Death for Teens



Click on the picture link for more information or call (352)367-4099 to sign up.



Texting while Driving is a hot topic. Opera Winfrey has covered this topic on her show numerous times and even has a web site, dedicated to the dangers of cell phone use (see picture link). At this time 33 states, D.C. and Guam ban text messaging for all drivers. 29 states, D.C., and Guam have primary enforcement (which means Law Enforcement can pull you over on sight); the others, secondary. An additional 7 states prohibit text messaging by novice drivers. Florida currently does not have any restrictions on cell phone or texting use. Please click on the GHSA logo to see a complete list of US state cell and texting laws.



Car and Driver conducted a **study comparing texting and driving to drinking and driving**. Follow the picture link to see their results.

Text blocking applications that utilize GPS enabled smart phones are now available that will allow parents (or any phone owner) to block texting, calling and web surfing on a cell phone while the phone is in motion. The phone will still be able to dial 911, and a set number of phone numbers programmed by the owner. The user would for example still be able to call home when driving if desired. There are many other great features specific to different applications including: setting a geographical area where the phone will be disabled or certain features will be disabled (i.e. no texting at school). There are also settings were the parent will receive a text if the phone is going faster than say 70 miles per hour (or any speed). Some services offer location tracking and text alerts if your child goes to certain areas that you specify (i.e. get a text message if you child went to the mall). The programs that offer these services all require some fee, either a onetime fee, monthly fees, or both. Research should be done by anyone interested to find the right product for you and your family. Web search "Parental Control apps for smart phone or parental control for cell phone to find more information. The least expensive and most effective tool to prevent texting while driving and sexting is to totally disable texting on the phone by calling the service provider and having the feature turned off.

~~ Deputy Leo Lowe & Deputy David Tate



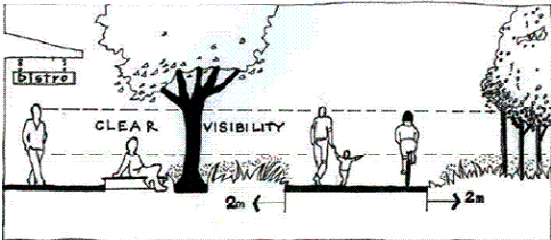
Crime Prevention Through Environmental Design (CPTED) For Neighborhoods



Key Concepts:

- * *Surveillance*
- * *Access Control*

★ **Increase outdoor activities.** Provide opportunity for natural surveillance outside your home.



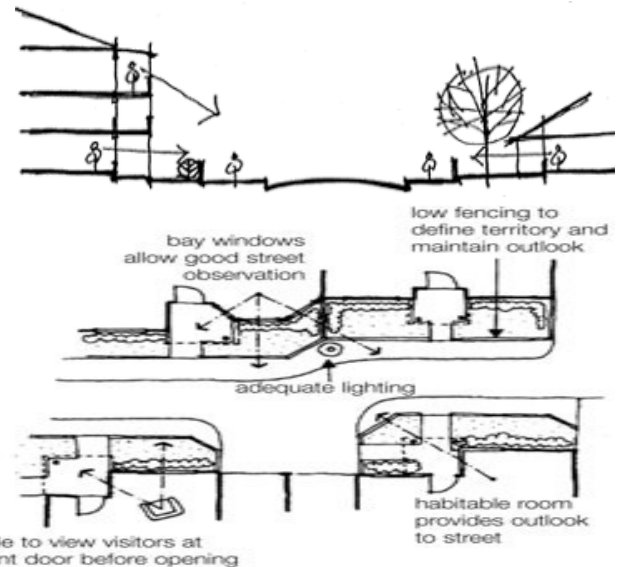
★ **Maximize visibility around your home.**

Follow the '3 foot-6 foot rule': keep your bushes trimmed low at 3 feet and your trees trimmed high at 6 foot. If you have bushes or trees that cannot be trimmed at these levels, thin them out so that someone walking by can see through them and notice any crime that may be going on behind them.

★ **Practice 'eyes on the street'.**

When you are home, have your blinds open and be aware of what is going on around your home and on your street.

If you see something that looks suspicious or out of the ordinary, write down a detailed description and call the Alachua County Sheriff's Office (955-1818 for non-emergencies, and 911 for emergencies). A detailed description of a person should include their gender, skin color, their approximate height and age, their hair color, their clothing, and which direction they were traveling in. A detailed description of a vehicle should include the color, make, model, number of doors, and license plate number, and any other distinguishing characteristics such as stickers or broken taillight, cracked windshield, etc.



Access Control: Deterring access to a crime target or victim by creating a perception of risk to a perpetrator.

★ **Lock your doors, windows, garages, sheds, and your vehicle and do not leave valuables in plain sight.**

★ **Consider installing an alarm system.**

Make sure you advertise your alarm system on the exterior of your home. Have a back-up for your alarm in case your phone line is cut.

Territorial Reinforcement: Using physical attributes to express ownership

★ **Clearly differentiate your private space from semiprivate and public spaces.**

Plant flowers, create rock gardens, install decorative lights, or put up a low, decorative fence along the borders of your territory. Use signs such as 'no trespassing' on large pieces of property.

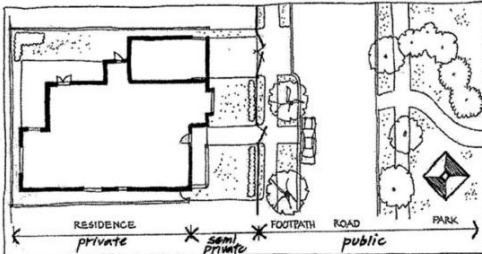
★ **Reduce desire, ability, and opportunity for crime through limiting access and target hardening.**



Continued PG 6

Crime Prevention Through Environmental Design

(CPTED) For Neighborhoods



- ★ Accentuate your neighborhood's entrance.
- ★ Show outsiders that this is your neighborhood and that you and your neighbors care.
- ★ Conduct walks with your neighbors to tour the neighborhood and let your presence be known.

Management and Maintenance: Additional expression of ownership and responsibility to your home and neighborhood.

★ Clearly display your home's address.

Do not display your name on your home or mailbox, but make sure your address is clearly legible for others to see from the road.

★ Discourage loitering by non-residents.

Know who belongs and who doesn't in your neighborhood and contact law enforcement if someone is in the neighborhood and is possibly going to commit a crime. Visitors to the neighborhood should be accompanied by a resident.

★ Complete regular maintenance on your property

Remove inoperable vehicles, trash, and debris. Replace light bulbs as needed. Maintain your lawns and landscape.

★ Enforce occupancy provisions of leases.

Adopt a Crime Free Leasing Addendum when leasing to renters. This is a civil contract between you and your renter that gives notice prior to occupancy that illegal activity will not be tolerated on your property.

Current Events



The Alachua County Sheriff's Office is proud to present our newest public service announcement relating to internet safety. Internet Safety is a huge problem in today's high tech world. Please call the Crime Prevention Unit to schedule a Internet Safety Presentation for your group today. (352) 374-1800. Please click on the picture to see our new PSA.

The Alachua County's Most Wanted felony warrants are constantly being updated. If you have information on any of these wanted subjects, please call the Crime Line at 352-372-7867 or file your tips online at www.alachuasheriff.org. Help us fight crime in Alachua County. Please click on the picture to see more.



Thank you for reading our publication. Please submit any feed back to crimepreventiontips@alachuasheriff.org. The Sheriff's Office has many programs please take a look at the links below and utilize the services that we provide.

[Teen Driver Challenge FREE \(Click Here\)](#)

[Rape Aggression Defense Course FREE \(Click Here\)](#)

[Explorer Program \(Click Here\)](#)

[Beat the Heat \(Click Here\)](#)

[Sexual Offender Search \(Click Here\)](#)

[Crime Reports.Com \(Click Here\)](#)

[Most Wanted \(Click Here\)](#)



The Alachua County Sheriff's Office Crime Prevention Unit is dedicated to making you safer. Please consider having a FREE home security survey or starting a residential crime watch. The Crime Prevention Unit also provides public safety classes on multiple topics including: internet safety, pedestrian safety, robbery prevention, good touch bad touch / stranger danger, and many more. To schedule any of the services listed above please call: **352-374-1800.**