

Crime Prevention Tips From: SHERIFF SADIE DARNELL



Hello Everyone, this is the first monthly Alachua County Crime Prevention Newsletter. This newsletter will be distributed to Residential, Business, and BOLO Crime Watch Members. We will also include anyone else who is interested. The newsletter will include crime prevention and safety tips from the Crime Prevention Unit and crime trends from the Criminal Intelligence Bureau. There will also be articles and information from other ACSO units and divisions. Many of the pictures are links to web pages or videos, just click on them.

Sincerely, *Sadie Darnell*

Crime Prevention Tips

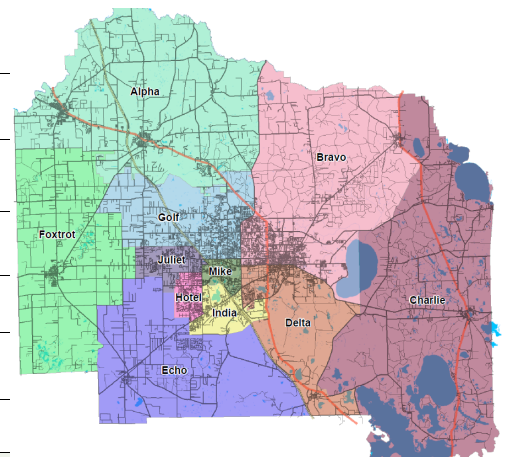
The modern concept of crime prevention originated in Great Britain during the 18th century. Until that time, all police action was taken after a crime had been committed. The principal deterring force was swift and severe punishment for persons found guilty of a criminal act.

Residential Burglary is a chronic nationwide problem that is growing by leaps and bounds. As it is a crime of opportunity, you can prevent a burglary in most cases by practicing basic crime prevention techniques. Crime, and fear of crime, threatens a community's well-being. You and your neighbors can help break this vicious cycle. The Alachua County Sheriff's Office invites you to join in a partnership with us by forming a strong foundation of crime watch neighborhoods. These neighborhoods will be the stepping stones to community revitalization. To join a crime watch today call: (352)374-1800. If you already belong to a crime watch please encourage your neighbors to attend meetings scheduled every two to three months. Encourage your friends in other neighborhoods to start a crime watch to help reduce crime.

Businesses can also start Business Watches which work similarly to neighborhood crime watches. A great program for businesses is the "BOLO" program or "Business On The Look Out". Employees' receive training on how to keep an eye out for crime and how to best report it. The BOLO program involves businesses that have employees that travel throughout the county. Cooperation between citizens, businesses, and Law Enforcement benefits the entire community.

INSIDE THIS ISSUE

Welcome & Intro to Crime Watch	1
Home Crime Prevention Tips	2
Simple Crime Prevention Tips	2
Family Crime Prevention Tips	3
Traffic Crime Prevention Tips	3
Intelligence Bureau Crime Trends	4



Home Crime Prevention Tip



Home Crime Prevention Tip: Despite Hollywood depictions of well-planned and executed burglaries, most are crimes of opportunity. The burglar is simply looking for an easy target. Is your home an easy target for a robber or burglar? Are you doing all you can to protect your home and your family from criminal intrusion? Is there more that you can do that would cause a potential burglar to decide to move on to another target? Answering these [20 Questions](#) can help you determine if you are doing all that you can to make your home safe or if there are other prevention measures that you may not have considered. Press Ctrl and click on [20 Questions](#). If your score is less than 80% you should have ASO Crime Prevention come to your home or business and conduct a [FREE](#) Residential Security Survey.

The survey is confidential and not subject to public record.

Call 352-374-1800 for a free survey or to start a Neighborhood Crime Watch.

Simple Crime Prevention Tip

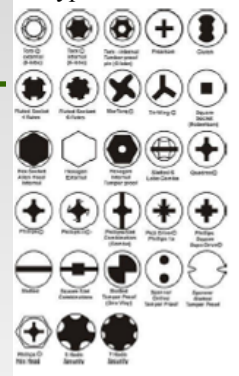


Here are a couple of simple tips that can be put in practice quickly and easily.

Vehicle tags are stolen every day. There are many unlicensed drivers that want to look legitimate. A simple way to defeat their efforts is to replace the two screws securing your tag with four screws. They should have different heads and have washers. Make one of the screws a star hex or some other odd type. It is unlikely that a thief will be carrying four different tools. Use a razor blade to put an X through your decal to prevent it from being removed in one piece.

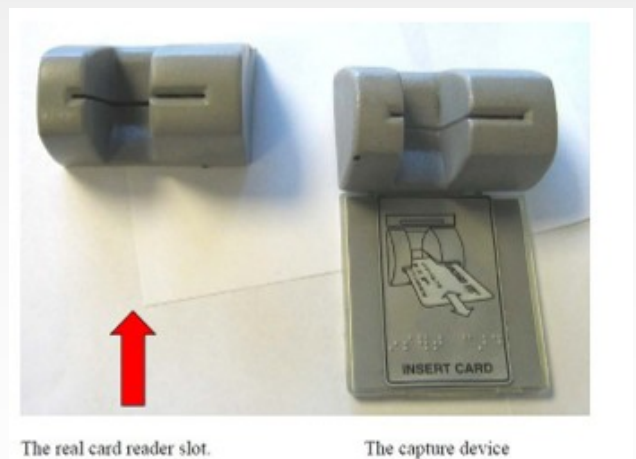


Types of Screws



Before using an ATM pull on the card receiver. There are criminals who will mount a molded skimmer (a device that reads your credit cards information) to the front which can record your credit card's data. A camera will then record your pin number. Pulling on the mechanism will not hurt it if the receiver is real. If it pulls off call it in to the Combined Communications Center at 352-955-1818.

Skimmers come in all shapes and sizes. Always be cautious when using your credit or ATM cards.



The real card reader slot.

The capture device

Family Crime Prevention Tip

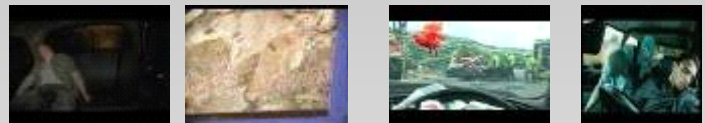


Family Crime Prevention Tip: Research has proven which behaviors are most responsible for teen related crashes. Inexperience and immaturity combined with speed, drinking and driving, not wearing seat belts, distracted driving (cell phone use, loud music, other teen passengers, etc.), drowsy driving, nighttime driving, and other drug use aggravate this problem. The number one preventative for teen crashes is proper education from the parent, and doing as you say. Teens that are told not to talk on their phone or text while driving will only listen if you practice what you preach. Talk about drinking and driving. Talk about distractions. Talk about driving sleepy. Show them some of these public service announcements Just press ctrl and click on the picture link.

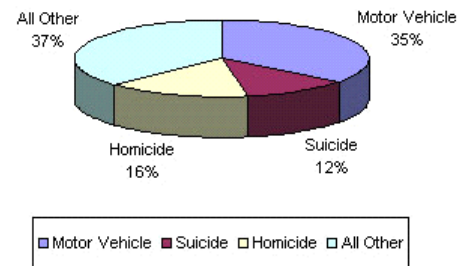
These videos are graphic but they illustrate the dangers in a way that teenagers can understand. Please watch them with your teens and discuss these very real dangers.

Sign your teens up for the Alachua County Teen Drivers Challenge. This is a hands-on course for giving teens the experience they need to drive safely under the supervision and training of Alachua County Sheriff's Office staff. It is FREE and could save their life.

Click on the picture link for more information or call



Leading Causes of Death for Teens



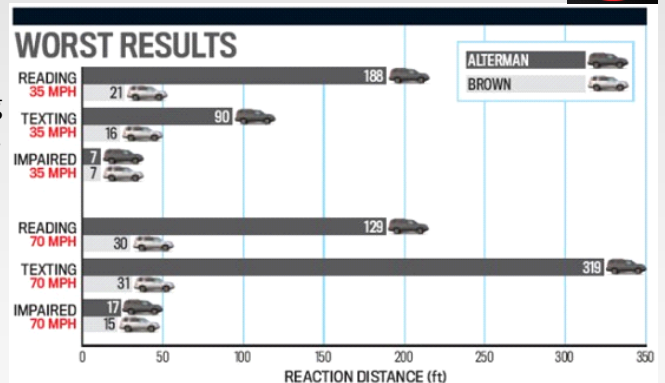
Traffic Crime Prevention Tip



Texting while Driving is a hot topic. Opera Winfrey has covered this topic on her show numerous times and even has a web site, dedicated to the dangers of cell phone use (see picture link). Wisconsin recently became the 25th state to pass a Texting Ban for All Drivers (05/05/10). Florida recently voted against anti-texting legislation.

Car & Driver Magazine conducted a **study comparing texting and driving to drinking and driving.** Follow the picture link to see their results.

Text Blocking Applications: With GPS enabled smart phones (i.e. blackberries and Windows mobile) there are now applications available that will allow parents (or any phone owner) to block texting, calling and web surfing on a cell phone while the car is in motion. The phone will still be able to dial 911, and a set number of phone numbers programmed by the owner. The user would for example still be able to call home when driving if desired. There are many other great features specific to different applications including: setting a geographical areas where the phone will be disabled or certain features will be disabled (i.e. no texting at school). There are also settings where the parent will receive a text if the phone is going faster than say 70 miles per hour (or any speed). Some services offer location tracking and text alerts if your child goes to certain areas that you specify (i.e. get a text message if your child went to the mall). The programs that offer these services all require some fee, either a one time fee, monthly fees, or both. Research should be done by anyone interested to find the right product for you and your family. The least expensive and most effective tool to prevent texting while driving is to totally disable texting on the phone by calling the service provider and having the feature turned off.



Intelligence Bureau Crime Trends

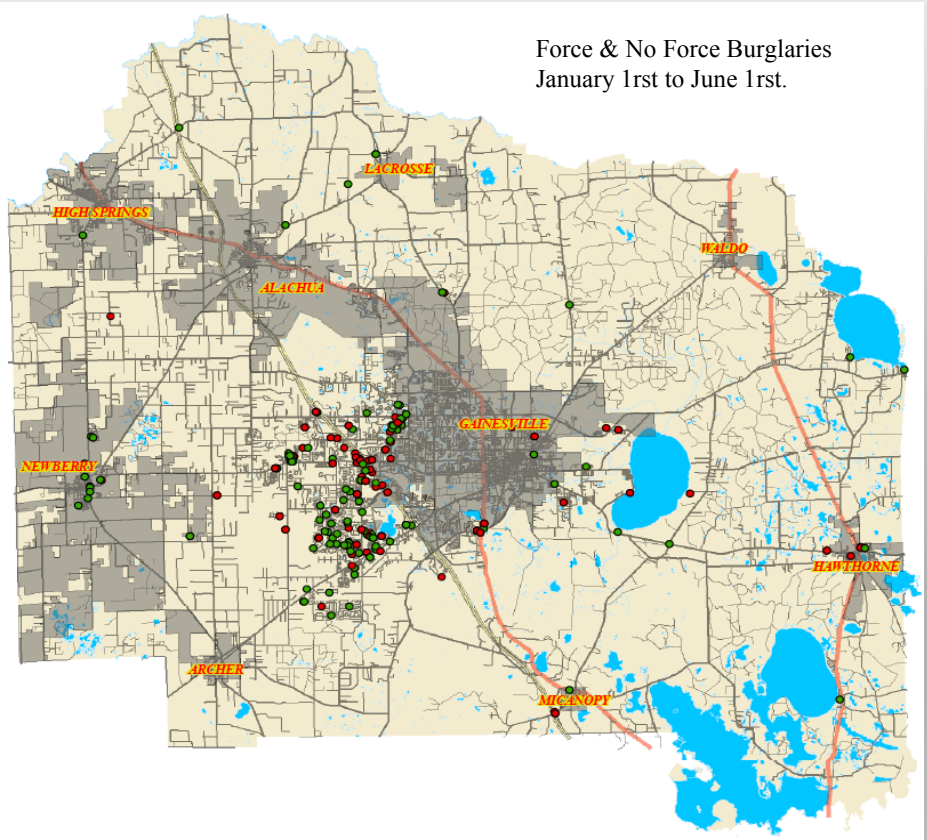


So far in 2010 there have been 190 vehicle burglaries worked by the Alachua County Sheriff's office. Of those 111 (58%) have been No Force burglaries. This basically means that the door of the vehicle was unlocked at the time of the crime. From those 111 crimes \$53,943.98 worth of property has been lost due to the simple fact that the vehicle was unsecured.

The top 5 most popular items (for thieves) are:

Auto Accessory/Parts	\$13,820
Equipment/Tools	\$9,285
Computer Equipment	\$7,669
Miscellaneous	\$6,176
Radio/Stereo	\$4,249

Please lock your doors & windows!



Remove or hide your valuables!

Remember to Lock It Or Lose It!

Thank you, for reading our first publication. If anything looked familiar remember that the first rule of Crime Prevention is to not reinvent the wheel. Please submit any feed back to crimepreventiontips@alachuasheriff.org.

Check out and become a fan of the Sheriff's Office Facebook page to learn about upcoming events and to see photos of past events. Click the green star to go to Facebook. We also have YouTube and twitter accounts that are linked with Facebook. Lastly, check out the ACSO section of the CrimeReports.Com site. We provide our crime stats in a user friendly format.

