

Crime Prevention Tips From: SHERIFF SADIE DARNELL



On September 28th, the BoCC voted to adopt their 2010/2011 budget with the additional \$507,000 cut to our already \$1.14 million cuts. This essentially means that we will be starting our new fiscal year October 1st with an almost \$2 million deficit. I have pleaded ACSO's case to the Commissioners in numerous budget hearings and have even offered them several options where to find the \$507,000 gap between my certified budget and their cuts. Even though some of the Commissioners on Tuesday night suggested they would be willing to "discuss" my last option, which was to apply our end of the year savings (estimated at approximately \$400,000) toward this; I will be starting the process immediately to appeal our budget to the Governor and Cabinet. It is important to note that the \$1.14 million cut was made by me when we submitted our certified budget to the Commission on May 3, 2010, knowing that the economy had not improved. Thank you to all who have supported us throughout this process and for recognizing that public safety must be a priority especially during tough economic times.

Sadie Darnell

Crime Prevention Tips

Sheriff Sadie Darnell has implement Community Oriented Policing at the Alachua County Sheriff's Office.

Community Policing is a policing philosophy that promotes and supports organizational strategies to address the causes and reduce the fear of crime and social disorder through problem solving tactics and community police partnerships. [~~www.cops.usdoj.gov](http://www.cops.usdoj.gov)

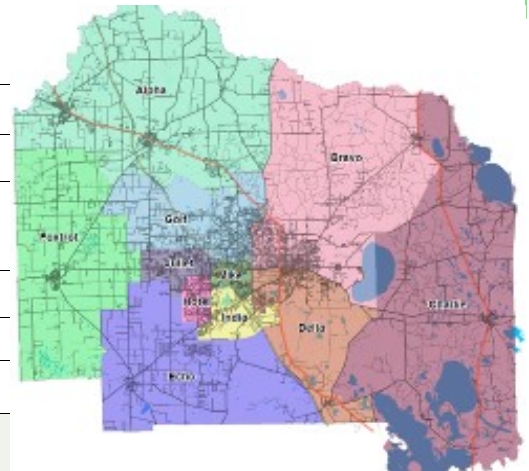
Community Partnerships are any combination of neighborhood residents, schools, churches, businesses, community-based organizations, elected-officials, and government agencies who are working cooperatively with the Sheriff's Office to resolve identified problems that impact or interest them.

The Sheriff's Office needs your help to accomplish our goal of partnering with the community. We need you to tell us about your concerns. We need you to report **all** crimes. We also need to know which services you think we need and we need feedback on those services, both good and bad so that we can refine them to best serve our community.

Remember, the Sheriff's Office needs you to assist us so that we can partner with all of our community to make it a better place.

INSIDE THIS ISSUE

Welcome & Intro to Crime Watch	1
Home and Simple Tips	2
Family and Traffic Tips	3
Crime Prevention Through Social Development	4
Intelligence Bureau Crime Trends	5
Current Events	5
Seasonal Safety	6



Home Crime Prevention Tip



General Home Safety and Security

- ★ If out of the house for an extended period of time, create the illusion that someone may still be home. Leave a TV or stereo on in the room where a burglar would most likely break in. Use exterior lighting and motion detectors to minimize burglar concealment.
- ★ Make sure all exterior doors have proper locks. Install 1-inch deadbolt locks on all exterior doors with 3-inch screws.
- ★ If you get an unexpected knock at the door, check to see who it is with a 180 degree peep hole before opening it.
- ★ Do not leave extra keys outside. Thieves will generally find them. If you are prone to locking yourself out, invest in a digital combination deadbolt.
- ★ Burglar-proof your glass patio doors by using a charlie bar and by taking up the slack in the top of the track..
- ★ Keep garage doors shut at all times. If you tend to forget they make an auto closer for around \$60.
- ★ Keep drapes and blinds shut - especially in rooms where there is expensive equipment. Don't advertise the items in your home.
- ★ Store cash, jewelry and other valuables in a safe or safety deposit box instead of leaving them lying around the home. Make sure your safe is bolted down or it is vulnerable to fire and theft.
- ★ Don't leave notes on the door for service people or family members. These alert the burglar that you are not home.
- ★ If you're going to be away from home for a few days, adjust your telephone ring to its lowest volume setting. An unanswered phone may tip off a burglar that no one is home. Also, have a neighbor or friend collect your newspaper and mail. Never cancel delivery - you don't know who will get that information.



We posted the tag tip in August and then a scary example of what could happen occurred in Sothern California. **Remember** this could have been avoided with four different headed screws and four washers. Click on the traffic photo to go to the video.

The gas pump skimmer incidents started just after last months letter was written.

Several local gas stations had the tiny devices inserted inside the pump which makes avoiding them difficult. The best way to avoid becoming a victim is to pay inside with cash. If you still want to pay at the pump, look for the seals that many gas stations have been putting across the credit card access door. If the seal is secure, then using your card should be safe. Click on the skimmer and pump pictures to go to articles and video.



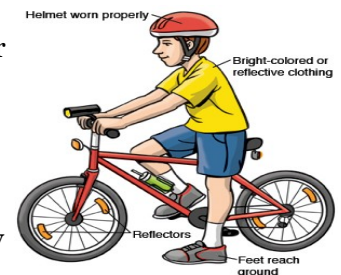
Simple Crime Prevention Tip



Accessorize Your Bike With a Photo!

The next time you buy a new bike, make a snapshot of that bike one of your very first accessories. Ask a family member or friend to take two photos of the bike, with you standing next to it. Put the first photo in the family album. On the back of the second photo, print the make and model of the bike, plus the serial number. Then put that picture with other important papers - such as family insurance policies. Follow the same steps for bikes you already own. If that bike - new or old - is ever stolen, the photo will make it easier for police to find it. If the bike is stolen and recovered, the photo, with you in it, will make it easier to prove you actually own it.

This process works well with **all** serialized belongings including televisions, stereos, mp3 players, gps units, etc. If you maintain a list of all of your belongings with their make, model, and serial numbers along with their color and value, you can greatly increase your chance of having them returned if they are ever stolen. This list can also save you money! If you categorize your belongings by type you can adjust your insurance so that you are not paying for coverage you do not require. The pictures will also assist with making the insurance claim. If any of your valuable belongings do not have serial numbers, consider engraving them. A good thing to engrave is: FL and your drivers license number. Pawn shops have to see the number of everyone who sells to them, if yours does not match they will know and law enforcement will be able to recognize it. ~ ~ Deputy Leo Lowe



Family Crime Prevention Tip



Protect Yourself From Violent Crime

- ★ Don't walk or jog early in the morning or late at night when the streets are deserted.
- ★ When out at night, try to have a friend walk with you; don't trust your dog alone to keep you safe.
- ★ Carry only the money you'll need on a particular day and as few credit cards as possible.
- ★ Don't display or show off your cash, winning lotto ticket, pay check or any other inviting targets such as: mp3 players, cell phones, hand-held electronic games, expensive jewelry, or clothing.
- ★ If you think someone is following you, switch directions or cross the street. If the person continues to follow you, move quickly toward an open store or restaurant or a lighted house. Don't be afraid to yell for help.
- ★ Try to park in well-lighted areas with good visibility and close to walkways, stores, and people.
- ★ Make sure you have your key out as you approach your door.
- ★ Always lock your car, even if it's in your own driveway. Don't leave your garage door opener in the car if it is in the driveway and never leave your motor running when an adult is not in the car.
- ★ Do everything you can to keep a stranger from getting into your car or to keep a stranger from forcing you into his or her car. Always drive with your doors locked.
- ★ If a dating partner has abused you, do not meet him or her alone. Do not let him or her in your home or car when you are alone.
- ★ If you are a battered spouse, call the police or sheriff immediately. Assault is a crime, whether committed by a stranger or your spouse or any other family member. If you believe that you and your children are in danger, call a crisis hotline or a health center (the police can also make a referral) and leave immediately. Call 1-800-393-SAFE (7233)
- ★ If someone tries to rob you, **give up your property—don't give up your life!**
- ★ If you are robbed or assaulted, report the crime to the Alachua County Sheriff's Office. Try to describe the attacker accurately. Your actions can help prevent someone else from becoming a victim.
~~National Crime Prevention Association
- ★ If you are a woman age 13 or up sign up for the Alachua County Sheriff's Office RAD program. This three day, 4 hours a day, **FREE**, self defense course could save your life! Click the RAD link to learn more.



Traffic Crime Prevention Tip



Walk To School Safely

October 6th is National Walk To School Day. Many of us remember a time when walking and bicycling to school was a part of everyday life. In 1969, about half of all students walked or bicycled to school. Today, however, the story is very different. Fewer than 15 percent of all school trips are made by walking or bicycling, one-quarter are made on a school bus, and over half of all children arrive at school in private automobiles.

This decline in walking and bicycling has had an adverse effect on traffic congestion and air quality around schools, as well as pedestrian and bicycle safety. In addition, a growing body of evidence has shown that children who lead sedentary lifestyles are at risk for a variety of health problems such as obesity, diabetes, and cardiovascular disease. Safety issues are a big concern for parents, who consistently cite traffic danger as a reason why their children are unable to bicycle or walk to school.

- ★ The number one rule is educate your children on pedestrian safety and who to trust.
- ★ Create a password or "safety phrase" that will let your children know who is safe.
- ★ Encourage children to walk in groups.
- ★ Parents' should periodically monitor their children's walking behavior & know their children's route and all of their friends they might hang out with.
- ★ Children should walk on sidewalks and cross only at the crosswalks if possible they should wait to cross until they reach a cross walk monitored by a crossing guard.
- ★ Parents' and children should report traffic control problems or speeding to public works or law enforcement as soon as possible. ~~ Deputy Leo Lowe

WHY walk in 2010?

To Create Safer Routes



To Engage Kids of All Abilities



To Enhance the Health of Kids



To Improve the Environment



Crime Prevention Through Social Development



SWAG's Mission to Help Kids Flourish

Since 1750, crime prevention has been the practice of identifying and reducing risk. With crime prevention still in effect over three and a half centuries later, it is clear the process is both working and continuing to develop. Identifying risk is complex and can involve a variety of indicators. Reducing risk can be just as daunting, especially if your understanding of reducing risk is to address the indicators or opportunities for crime.

When thinking about crime prevention, you must consider both the victim and the offender. This is often why crime prevention practices fail to prevent crime. Risk lies within both the victim and the offender, something frequently overlooked when developing interventions. For example, consider a burglary. Most understand that the victim of the crime is at risk if they provide opportunity, by leaving their doors unlocked or their garage door open, but what kind of risk is there for the offender to commit such a crime?

Risk for offenders comes in the form of interest and is typically developed in the social environment. Most people do not commit crime because they do not have the interest. But how is interest developed? In the example discussed previously, how does an individual become interested in committing a burglary? One guess could be necessity. It is commonly understood that if people do not have what they need to survive they will get it by whatever means necessary. Those means could be legitimate, such as working and earning money, or illegitimate, such as through stealing.

Crime Prevention Through Social Development (CPTSD) is an intervention strategy aimed at addressing indicators for potential offenders, beginning with childhood. CPTSD recognizes the broad range of risk factors for individuals becoming offenders and attempts to mitigate those risks through connecting individuals and families to resources. Connecting individuals and families to resources provides the legitimate support people need to be successful in society, deterring them from choosing illegitimate means of survival.

CPTSD originated in Canada and is slowly finding popularity in the United States. Canada estimates that "Social interventions can yield positive, measurable benefits within three years, with reductions in crime of 25% to 50% within 10 years." In June 2010, the Alachua County Jail had 973 inmates at a cost of \$84 per day, totaling \$81,732 a day to house those inmates. Reducing crime by 25% could save \$7,458,045 a year in inmate housing costs, given these statistics. In addition, Alachua County jail data demonstrates that more than 90% of the inmates who complete their GED or programs in construction, culinary, or automotive training stay out of jail, an indication that social development in Alachua County is already preventing crime.

CPTSD recognizes that "when kids flourish, crime doesn't," which is why the Alachua County Sheriff's Office supports a new and growing grassroots organization called the Southwest Advocacy Group, or more commonly, SWAG. This group of dedicated and active citizens and agency providers of Southwest Gainesville is committed to this mission. They meet twice monthly to outline their goals and progress for their community. Such goals include advocating for a community resource center in the heart of 6 neighborhoods that lack significant resources for success, advocating for health care and education assistance for adults and children of Southwest Gainesville, and most of all, bringing people of the neighborhoods together for a common goal, their children's futures.

In the 7 months since SWAG began, their efforts have paid off in a big way. With bringing 2 after school programs to the community, assisting the Mobile Outreach Clinic with identifying locations within the SWAG neighborhoods to provide health care to residents, and receiving attention and resources for creating a community resource center in the Linton Oaks neighborhood, SWAG is well on its way to addressing the needs of the community and ultimately preventing crime.

SWAG meets new people at every meeting who are willing to help. With each new member, new possibilities are created and connections to community resources are made. SWAG invites you to be a part of their growing success. Please join us on the second Friday of each month from 10am-12pm at the Tower Road Library and on the last Thursday of the month from 6:00pm-8:00pm at the Hidden Oaks Mobile Home Park clubhouse located at 100 Castle Drive, just look for our signs in at the entrances of any of our six 32607 neighborhoods. If you have any questions or would like more information, please contact Katie Fields at the Alachua County Sheriff's Office at 352-374-1800 or at kfields@alachuasheriff.org.

Resource: <http://www.ccsd.ca/cpsd/ccsd/>

~~ COPS Analyst Katie Fields

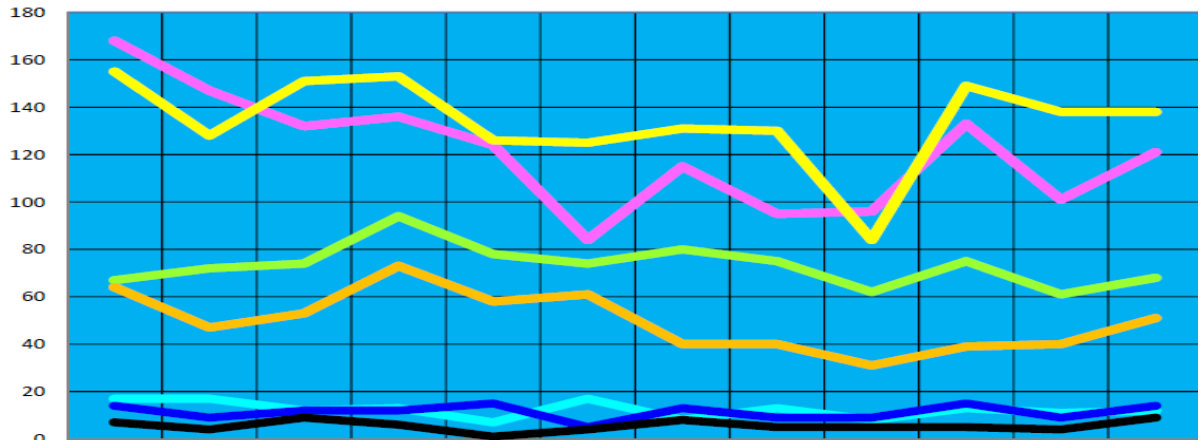


Gail Monahan from Alachua County Housing Authority & Nona Jones from GRU share information on housing and utilities

Intelligence Bureau Crime Trends



The statistics listed reflect last twelve months in Alachua county. The substance abuse section includes all alcohol and drug violations except those that have been handled by the narcotics unit. If you would like to learn more about the crimes that have occurred in your area, Please check out WWW.CRIMEREPORTS.COM



	Sept	Oct	Nov	Dec	Jan	Feb	Mar	Apr	May	Jun	Jul	Aug
Stolen Vehicle	17	17	12	13	7	17	8	13	8	13	11	12
Burglary	168	147	132	136	124	84	115	95	96	133	101	121
Domestic Incidents	155	128	151	153	126	125	131	130	84	149	138	138
Sex Offenses	14	9	12	12	15	5	13	9	9	15	9	14
Disturbances & Assaults	67	72	74	94	78	74	80	75	62	75	61	68
Substance Abuse	64	47	53	73	58	61	40	40	31	39	40	51
Robberies	7	4	9	6	1	4	8	5	5	5	4	9

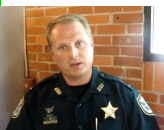
Current Events



Alachua County Sheriff Alachua County's Most Wanted. This episode aired on WCJB TV 20 on Aug 29, 2010. If you recognize any of these wanted subjects, please call the Crime Line at 352-372-7867 or file your tips online at www.alachuasheriff.org.



Alachua County Sheriff New videos posted to our agency YouTube site. In case you missed these stories when they aired on WCJB TV 20 (www.wcjb.com) the first time they aired, you can watch them again by following the link here. This is a story on the recent arrest of the scammer involved in the gas pump skimmers.



A recent Gainesville Area Chamber of Commerce Luncheon focused on Employee Theft. Follow the link below to see an interview from that luncheon with our PIO - Lt. Steve Maynard as he discusses the growing problem of employee theft. The video is from the Chamber of Commerce's YouTube site

Alachua County Sheriff October is Domestic Violence Awareness Month. This is a new Public Service Announcement from the Alachua County Sheriff's Office, Peaceful Paths and the Department of Children & Families. Please see www.alachuasheriff.org for more information.



Alachua County Sheriff The Sheriff's Office would love for you to take advantage of three of our awesome programs that are offered Free of charge to residents of our county. The Teen Driver Challenge is a course designed to expand the driving skills of our newest drivers. The RAD or Rape Aggression Defense course teaches women the skills to defend themselves if faced by an attacker. The Explorer Post is a program that teaches teens the skills and values that are necessary to become a Law Enforcement Officers. Please click on the pictures to learn more.

Seasonal Safety



With Halloween right around the corner the Alachua County Sheriff's Office Crime Prevention Unit would like to provide you with some basic safety tips to make your Halloween an enjoyable one. The excitement and sprit of the holiday may lead to parents and children dropping their guard and doing things that they wouldn't normally do, or leaving common sense at home while hunting for more candy.

One main point that we would make for parents this year is to check the web for local sex offenders and predators in your area (or the area your kids will be at). Like it or not sex offenders/predators can be dangerous especially when our kids are walking around at night, wearing costumes, and trying to find as much candy as they can carry. Have your kids avoid these individuals' homes all together.

Another point we would like to make for parents would be to remind their kids of the difference between a Halloween prank and potential criminal acts. Throwing eggs at someone's car or house may sound like the typical Halloween prank but the permanent damage that this can cause could result in criminal charges.

Top five Halloween safety tips:

1. Use extra care when crossing streets because its dark and you may not be as visible in your ninja costume.
2. Never go into a stranger's home, it's a scary world out there. Try and teach your kids to make sound judgments when dealing with people they do not know. Remember common sense is sometimes left at home when the mission is to gather as much chocolate and sugar as one can carry.
3. Try to find a costume that will not obstruct their vision, if this becomes a debate explain to your kids your concern about being able to see, test their peripheral vision. Remember that the safety of your kids should be your first priority.
4. Check the candy before your kids eat it. To make this a bit easier think about serving a big meal to your kids before they go out to gather up all the candy they can find.
5. Finally know the plan, find out what your children are doing if they go off on their own. Try and develop some way to keep in touch and stay updated. Again remember common sense is left at home too often, I cannot stress this enough.

In conclusion we would also like to recommend the Halloween alternative events that are organized throughout the County as a safer way to enjoy the holiday. Check the paper and the web to find out about these events in your area. Remember, just because you're at a "safer" Halloween experience, don't let your guard down, stay safe and use the same safety tips discussed above.

A lot of these tips were found at www.Halloween-Safety.com, please visit their web site for more useful information.

~~Deputy David Tate

Thank you, for reading our second publication. Please submit any suggestions or feed back to crimepreventiontips@alachuasheriff.org. The Sheriff's Office has many programs please take a look at the links below and utilize the services that we provide.

Useful Links: [Teen Driver Challenge FREE \(Click Here\)](#)
[Rape Aggression Defense Course FREE \(Click Here\)](#)
[Explorer Program \(Click Here\)](#)
[Beat the Heat \(Click Here\)](#)
[Sexual Offender Search \(Click Here\)](#)
[Crime Reports.Com \(Click Here\)](#)
[Most Wanted \(Click Here\)](#)

The Alachua County Sheriff's Office Crime Prevention Unit is dedicated to making you safer. Please consider having a FREE home security survey or starting a residential crime watch. The Crime Prevention Unit also provides public safety classes on multiple topics including: internet safety, pedestrian safety, robbery prevention, good touch bad touch / stranger danger, and many more. To schedule any of the services listed above please call: **352-374-1800**.